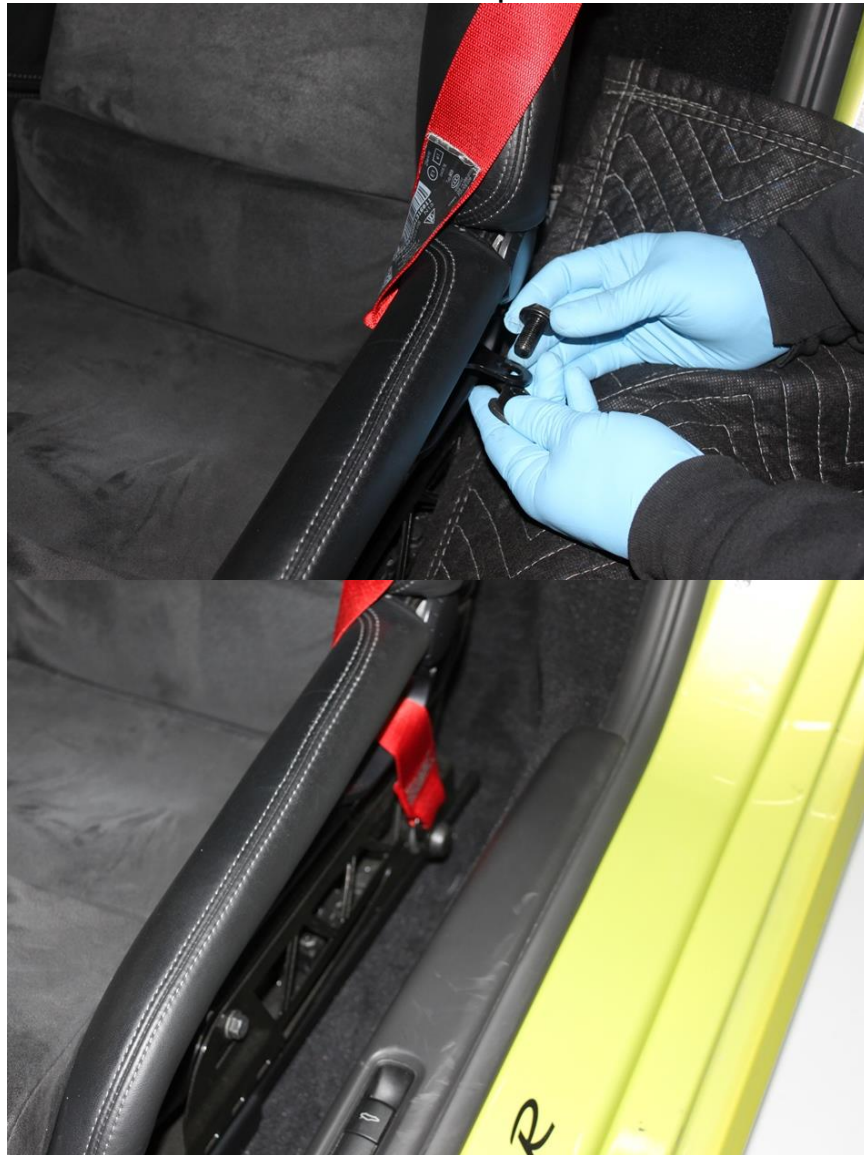


CMS 987.1/987.2 Cayman Rollbar Installation Instructions

INTERIOR REMOVAL:

Disconnect negative battery terminal
Unbolt outer seat belt anchor point from seat.



Remove floor front lower floor seat trim to access bolts for seat.



Unbolt the seats at the four points, then tilt seat back to access plug below.



Unplug seat at large yellow connector by first releasing black lock tab, pulling it straight out.



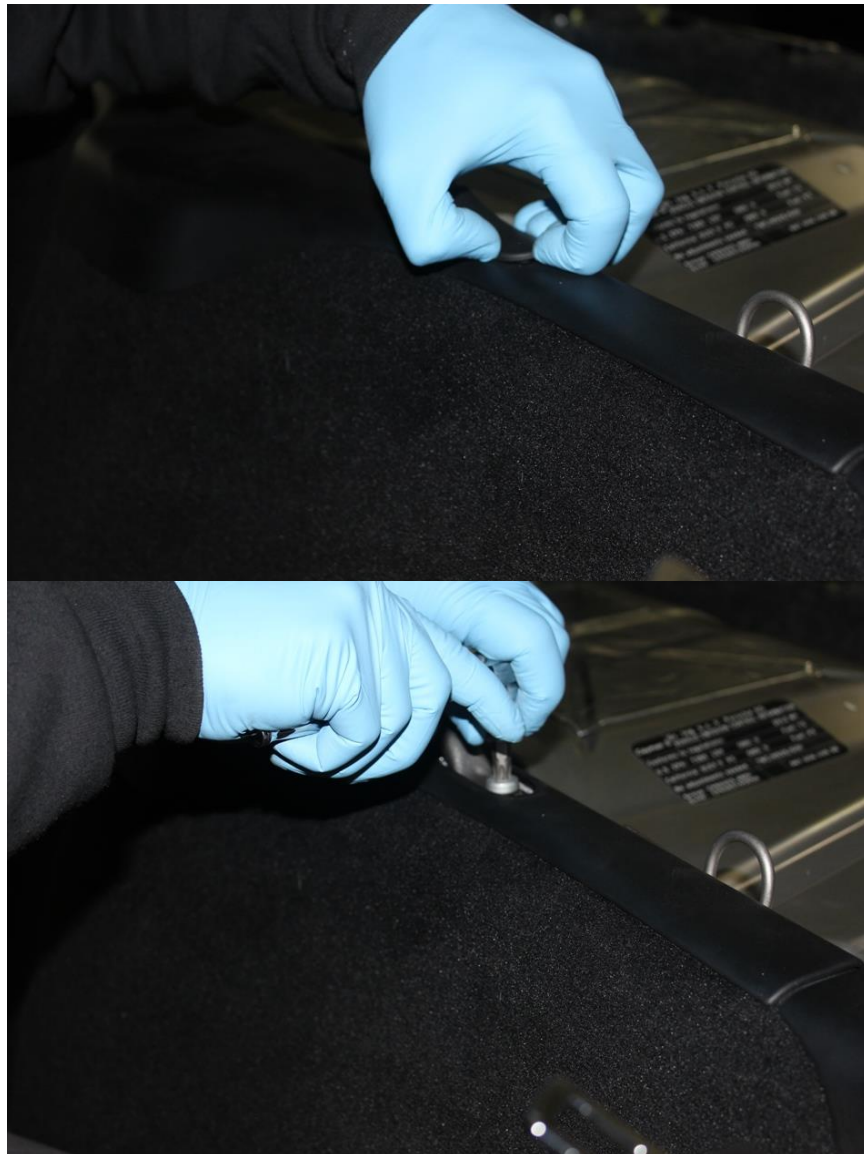
Remove carpet over engine cover.



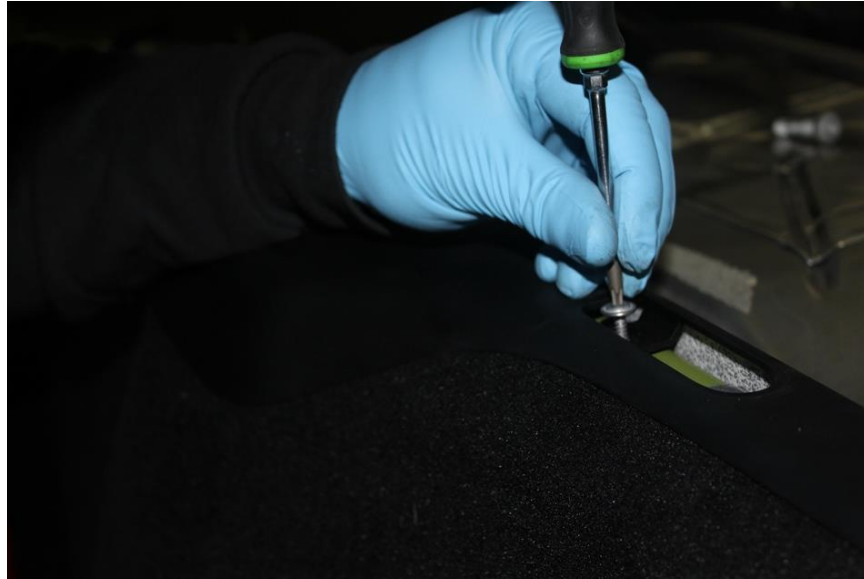
Remove silver garnish at back of engine cover by first removing two screws behind the oil and coolant fill door, then pull up firmly working from one end to the other.



Remove upper grab bar at front of engine cover by pulling up rubber base trims to access bolts. PIC



Remove top trim piece by removing the 1 screw below grab bar then pull/pry up working from one end to the other.



Next remove top covers for seat belt guides by pulling up and out.



C pillar trim can now be removed by first removing screw at the lower front edge for each side. The trim piece can now be pried out by starting at the top hatch opening and pulling down. Unplug light then pull trim up and out.



Rear speaker/strut covers can now be removed by first removing two screws at front then prying up beside the strut dome. Unplug speaker.



Door pocket sections now come out by removing the 4 remaining screws then prying at the clips around the seat belt area pulling them to the middle of the car.





Next unbolt the seat belt guide pins.

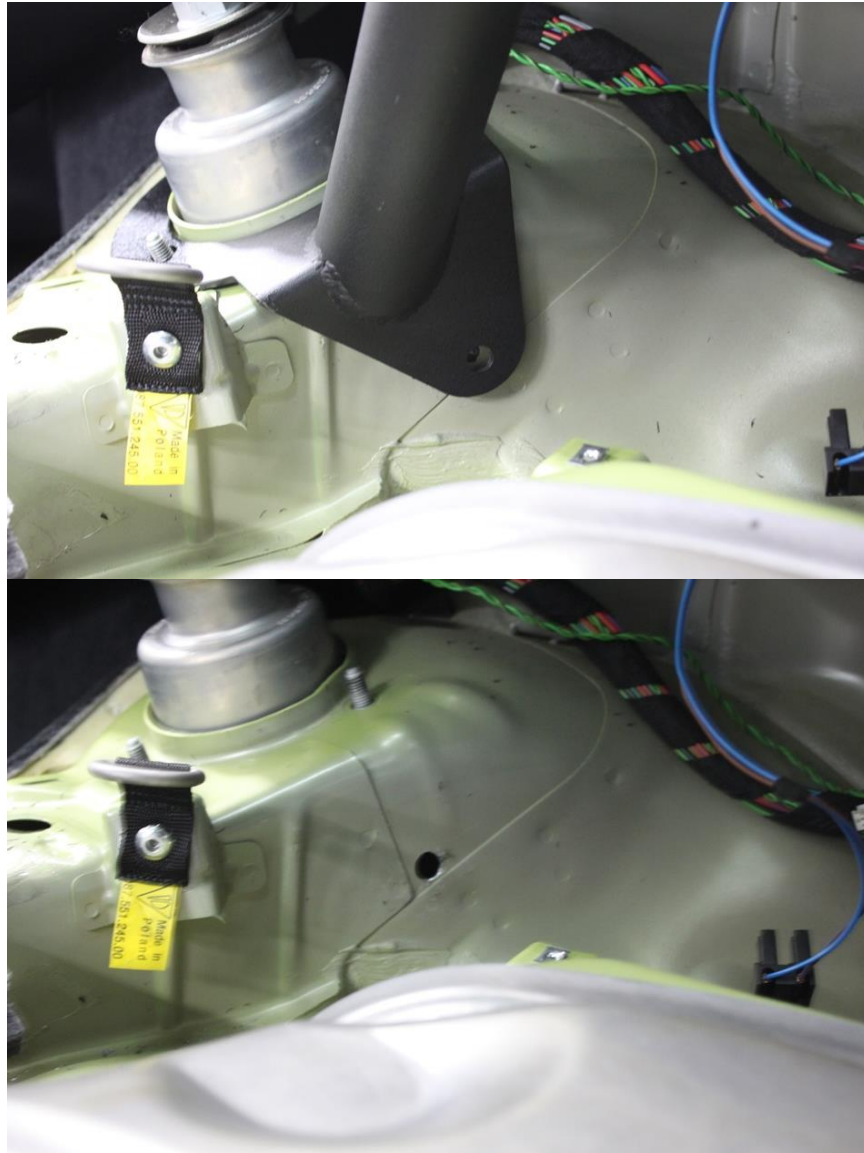


ROLL BAR INSTALLATION

Set main hoop in place and slide seat belt pins in, do not bolt yet.

Remove rear strut mount nuts. Set rear stays in place and loosely bolt together.

Mark hole on front face of strut tower. Remove rear stays and drill a 7/16" hole at mark. This can be done with suspension in place if you are careful not to allow drill bit to go too deep after hole is made. It may touch/nick the spring otherwise. Set rear stays back in and loosely bolt together for trim fitment.



TRIM CUTTING

Cover top areas of trim to be cut with blue tape for protection and marking.

FRONT POCKET TRIM:

Overlay template on top face of piece and mark area to be cut out. Front edge of tube will line up with line for seat belt cap piece. Front inner corner of the door will need to be trimmed for operation.

After “banana” shape has been cut you can then cut the trim into two sections as marked on the template from outer edge of main hoop to side of car. This will make final trimming and installation much easier.

Install door pocket section with screws. Leave front section off for now.



REAR SPEAKER/STRUT DOME TRIM

Align template at bottom edge next to notch for cargo net attachment point. Fold over the top surface and align with edge of speaker curve.

Mark area to be cut and cut out. Cut will go into the base of the strut dome portion slightly.

After cutout is complete you can then cut trim in two by cutting a straight line along the base of the strut dome from the cutout to the outside of car. Final trimming adjustments and installation will be much easier.

Install speaker portion of trim now by plugging in speaker and installing screws.



ROLL BAR INSTALL CONT.

Remove roll bar assembly for ease of trim install. Install C pillar trim by connecting light first, slide into clips at back edges of speaker and pocket door pieces then pop in top clips.



Install main hoop assembly again but do not final tighten. Be sure to put the two M8 washers between the seat belt guide pin and the body for correct

spacing as the factory spacer will not fit without modification.



Next install rear stays and start all fasteners. Raise rear of car and set on jack stands to allow full droop of suspension. Then install new bolt for rear stays from the wheel well into the cabin and start nut. (Assistance from a second party will be helpful for this bolt.)



Install rear cross brace and start fasteners at interlock connections.

Begin tightening bolts in this order: Seat belt pin bolts for main hoop, Rear strut mount nuts, New bolt through front of strut tower, all interlock connections.

Install dome section of rear trim to cover strut towers. Followed now by the silver trim at back of engine cover.



Install front portion of pocket door trim. Followed by the seat belt cap trim. PIC 32



Front center trim can now be installed along with the grab bar.
Engine cover carpet goes in next.
Install seats in reverse order.
Make sure seats are plugged back in before connecting battery to avoid a seat airbag fault.



